

STANDARD CIRCUIT DIAGRAM

NOTE ON USING CIRCUIT DIAGRAMS

1. SAFETY

The components identified by the Δ symbol and shading are critical for safety. For continued safety replace safety critical components only with manufactures recommended parts.

2.SPECIFIED VOLTAGE AND WAVEFORM VALUES

The voltage and waveform values have been measured under the following conditions.

- (1)Input signal :PAL Colour bar signal
- (2)Setting positions of each knob/button and variable resistor :Original setting position when shipped
- (3)Internal resistance of tester :DC 20k Ω /V
- (4)Oscilloscope sweeping time :H \Rightarrow 20 μ S/div
:V \Rightarrow 5mS/div
:Others \Rightarrow Sweeping time is specified
- (5)Voltage values :All DC voltage values

* Since the voltage values of signal circuit vary to some extent according to adjustments, use them as reference values.

3.INDICATION OF PARTS SYMBOL [EXAMPLE]

●In the PW board :R1209 \rightarrow R209

4.INDICATIONS ON THE CIRCUIT DIAGRAM

(1)Resistors

●Resistance value

- No unit :[Ω]
- K :[K Ω]
- M :[M Ω]

●Rated allowable power

- No indication :1/16[W]
- Others :As specified

●Type

- No indication :Carbon resistor
- OMR :Oxide metal film resistor
- MFR :Metal film resistor
- MPR :Metal plate resistor
- UNFR :Uninflammable resistor
- FR :Fusible resistor

*Composition resistor 1/2 [W] is specified as 1/2S or Comp.

(2)Capacitors

●Capacitance value

- 1 or higher :[pF]
- less than 1 :[μ F]

●Withstand voltage

- No indication :DC50[V]
- AC indicated :AC withstand voltage [V]
- Others :DC withstand voltage [V]

*Electrolytic Capacitors

47/50[Example]:Capacitance value [μ F]/withstand voltage[V]


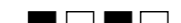
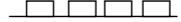
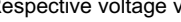
●Type

- No indication :Ceramic capacitor
- MY :Mylar capacitor
- MM :Metalized mylar capacitor
- PP :Polypropylene capacitor
- MPP :Metalized polypropylene capacitor
- MF :Metalized film capacitor
- TF :Thin film capacitor
- BP :Bipolar electrolytic capacitor
- TAN :Tantalum capacitor

(3)Coils



- No unit :[μ H]
- Others :As specified

(4)Power Supply



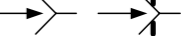
-  :B1
-  :B2
-  :9V
-  :5V

*Respective voltage values are indicated

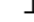

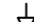

(5)Test point

-  :Test point
-  :Only test point display

(6)Connecting method

-  :Connector
-  :Wrapping or soldering
-  :Receptacle

(7)Ground symbol

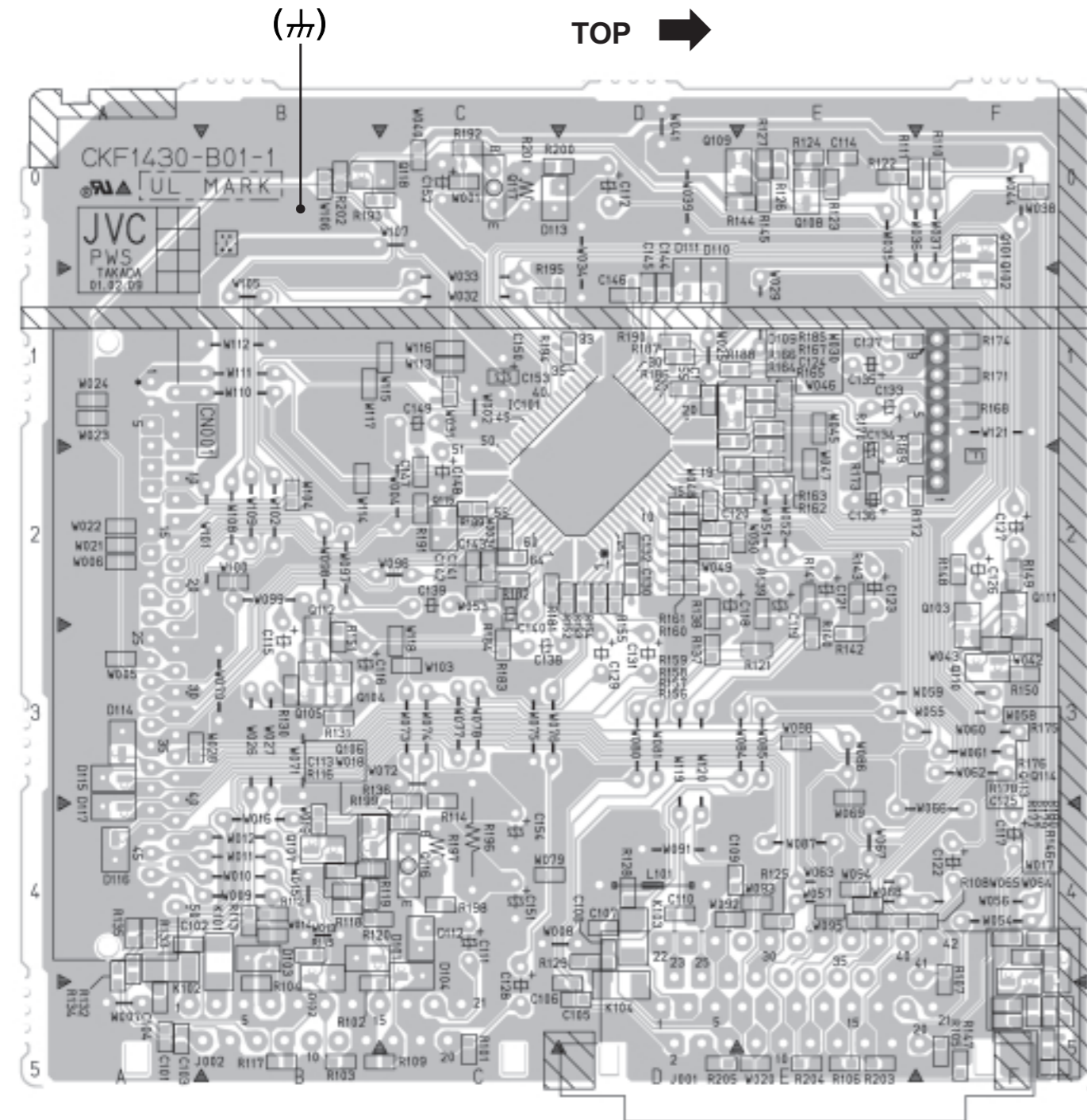
-  :LIVE side ground
-  :ISOLATED(NEUTRAL) side ground
-  :EARTH ground
-  :DIGITAL ground

5.NOTE FOR REPAIRING SERVICE

This model's power circuit is partly different in the GND. The difference of the GND is shown by the LIVE : (\perp) side GND and the ISOLATED(NEUTRAL) : (\neq) side GND. Therefore, care must be taken for the following points.

- (1)Do not touch the LIVE side GND or the LIVE side GND and the ISOLATED(NEUTRAL) side GND simultaneously. If the above caution is not respected, an electric shock may be caused. Therefore, make sure that the power cord is surely removed from the receptacle when, for example, the chassis is pulled out.
- (2)Do not short between the LIVE side GND and ISOLATED(NEUTRAL) side GND or never measure with a measuring apparatus (oscilloscope, etc.) the LIVE side GND and ISOLATED(NEUTRAL) side GND at the same time. If the above precaution is not respected , a fuse or any parts will be broken.

◇ Since the circuit diagram is a standard one, the circuit and circuit constants may be subject to change for improvement without any notice.



CONTENTS

SEMICONDUCTOR SHAPES 2-2

BLOCK DIAGRAM 2-3

CIRCUIT DIAGRAMS

MAIN PWB CIRCUIT DIAGRAM 2-5

POWER & DEF PWB CIRCUIT DIAGRAM 2-9

100Hz PWB CIRCUIT DIAGRAM 2-11

MICON PWB CIRCUIT DIAGRAM 2-13

FRONT CONTROL PWB CIRCUIT DIAGRAM 2-15

CRT SOCKET PWB CIRCUIT DIAGRAM 2-17

AV SW PWB CIRCUIT DIAGRAM 2-19

PATTERN DIAGRAMS

MAIN PWB PATTERN 2-21

POWER & DEF PWB PATTERN 2-23

100Hz PWB PATTERN 2-25

MICON PWB PATTERN 2-27

FRONT CONTROL PWB PATTERN 2-29

CRT SOCKET PWB PATTERN 2-31

AV SW PWB PATTERN 2-32

SEMICONDUCTOR SHAPES

TRANSISTOR

BOTTOM VIEW	FRONT VIEW				TOP VIEW
					CHIP TR

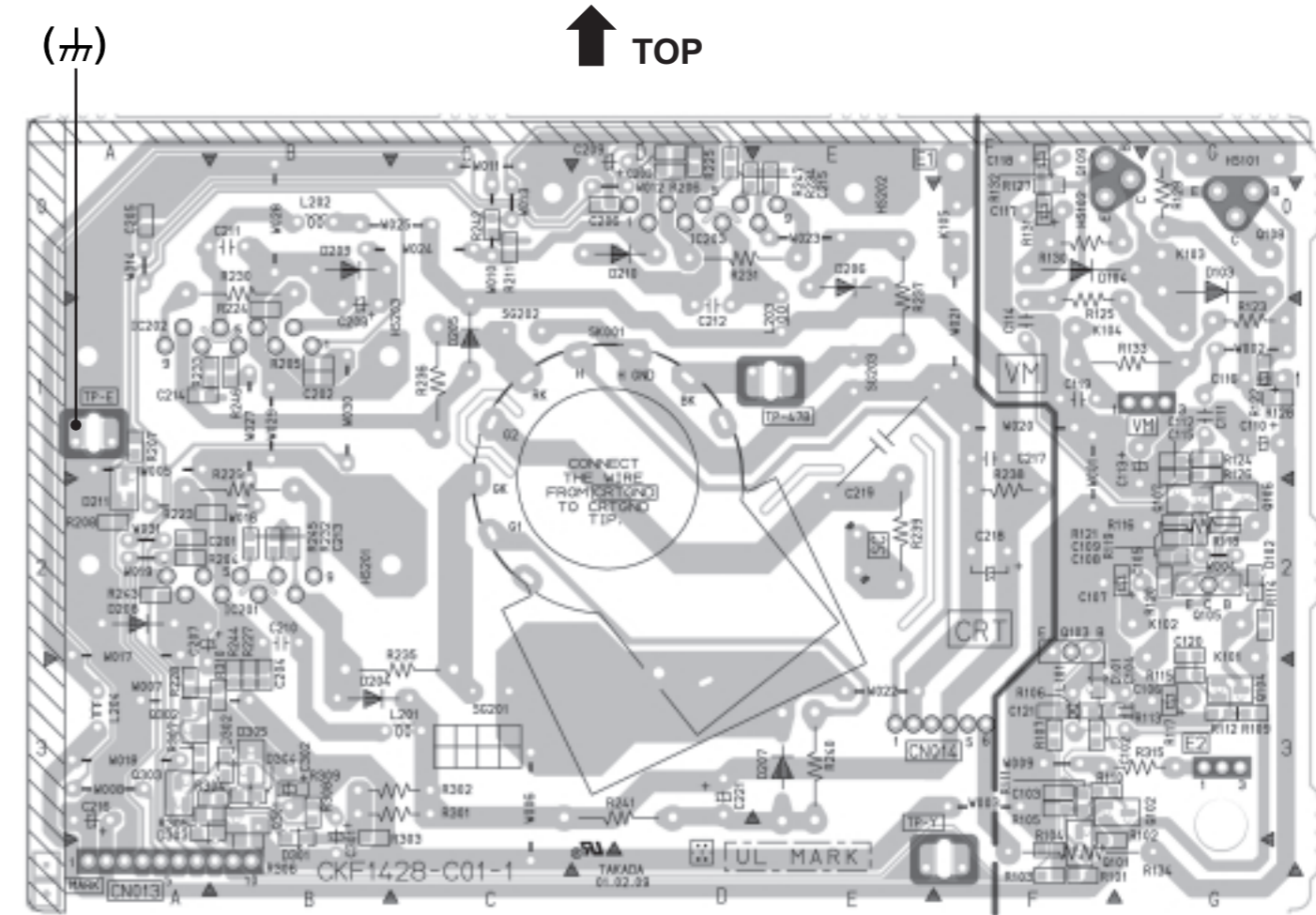
IC

BOTTOM VIEW	FRONT VIEW			TOP VIEW

CHIP IC

TOP VIEW	

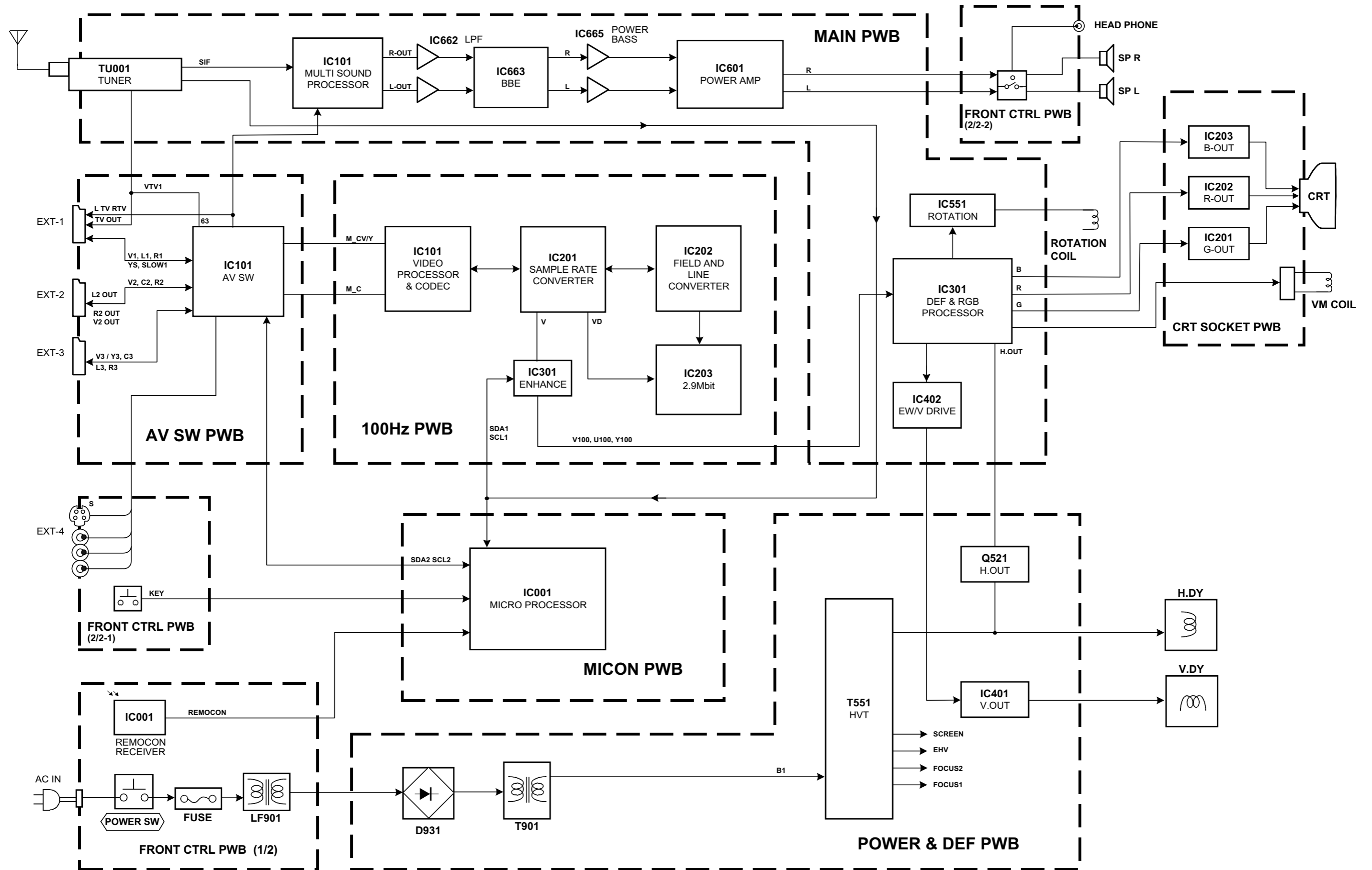
CRT SOCKET PWB PATTERN



AV32X10EUS
 AV28X10EUS
 AV28X10EKS
 AV28X10EIS

AV32X10EUS
 AV28X10EUS
 AV28X10EKS
 AV28X10EIS

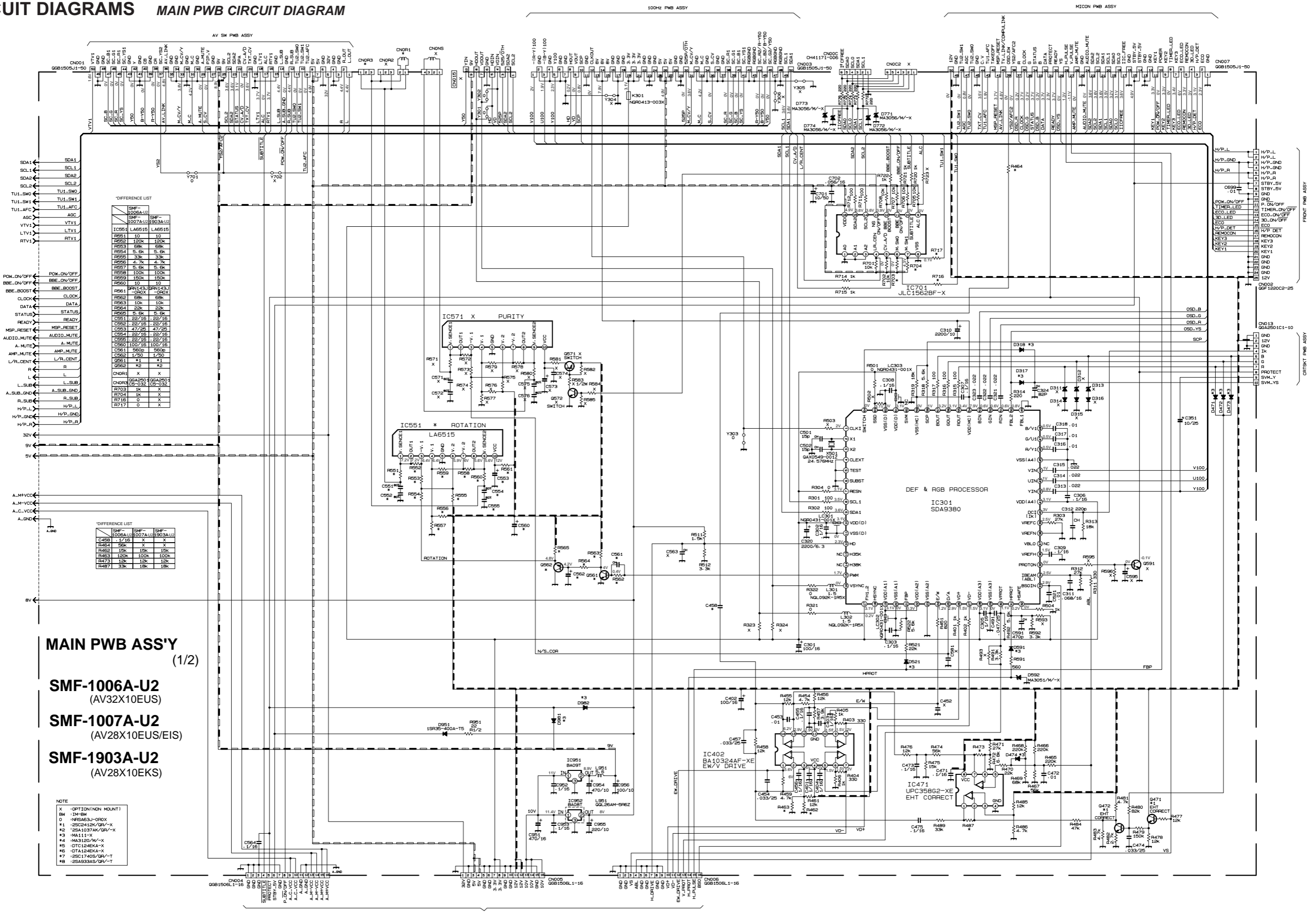
BLOCK DIAGRAM



CIRCUIT DIAGRAMS MAIN PWB CIRCUIT DIAGRAM

AV32X10EUS
AV28X10EUS
AV28X10EKS
AV28X10EIS

AV32X10EUS
AV28X10EUS
AV28X10EKS
AV28X10EIS

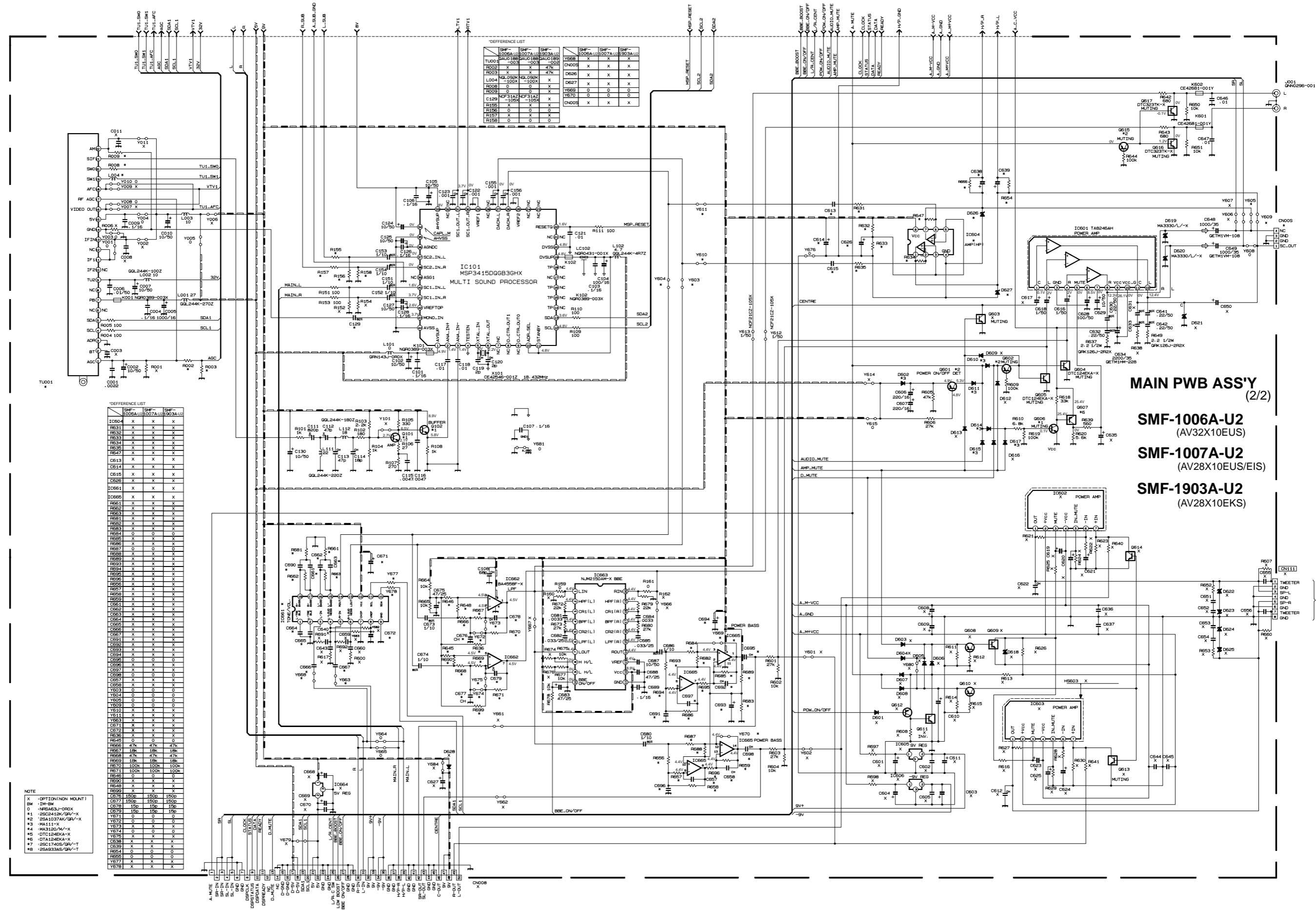


MAIN PWB ASS'Y (1/2)
SMF-1006A-U2 (AV32X10EUS)
SMF-1007A-U2 (AV28X10EUS/EIS)
SMF-1903A-U2 (AV28X10EKS)

- NOTE
- X : OPTION (NON MOUNT)
 - BM : 134-BW
 - 0 : NPSA63J-OROX
 - #1 : 25C2412K/GR-X
 - #2 : 25A1037AK/GR-X
 - #3 : MA111-X
 - #4 : MA3120/M-X
 - #5 : DT124EKA-X
 - #6 : DT124EKA-X
 - #7 : 25C1740S/GR-T
 - #8 : 25A933AS/GR-T

AV32X10EUS
AV28X10EUS
AV28X10EKS
AV28X10EIS

AV32X10EUS
AV28X10EUS
AV28X10EKS
AV28X10EIS



DIFFERENCE LIST

REF	REF-1	REF-2	REF-3	REF-4	REF-5	REF-6
TU001	SMF-1006A-U2	SMF-1007A-U2	SMF-1903A-U2			
R002	X	X	47K	X	X	X
R003	X	X	47K	X	X	X
L004	NL004K-100K	NL004K-100K	47K	X	X	X
R008	0	0	0	D627	X	X
R009	0	0	0	T0691	0	0
R156	0	0	0	Y670	0	0
R157	X	X	X	DN008	X	X
R158	X	X	X			
R159	0	0	0			
C129	-105K	-105K	X			

DIFFERENCE LIST

REF	REF-1	REF-2	REF-3	REF-4	REF-5	REF-6
IC604	X	X	X			
R631	X	X	X			
R632	X	X	X			
R633	X	X	X			
R634	X	X	X			
R635	X	X	X			
R636	X	X	X			
R637	X	X	X			
R638	X	X	X			
R639	X	X	X			
R640	X	X	X			
R641	X	X	X			
R642	X	X	X			
R643	X	X	X			
R644	X	X	X			
R645	X	X	X			
R646	X	X	X			
R647	X	X	X			
R648	X	X	X			
R649	X	X	X			
R650	X	X	X			
R651	X	X	X			
R652	X	X	X			
R653	X	X	X			
R654	X	X	X			
R655	X	X	X			
R656	X	X	X			
R657	X	X	X			
R658	X	X	X			
R659	X	X	X			
R660	X	X	X			
R661	X	X	X			
R662	X	X	X			
R663	X	X	X			
R664	X	X	X			
R665	X	X	X			
R666	X	X	X			
R667	X	X	X			
R668	X	X	X			
R669	X	X	X			
R670	X	X	X			
R671	X	X	X			
R672	X	X	X			
R673	X	X	X			
R674	X	X	X			
R675	X	X	X			
R676	X	X	X			
R677	X	X	X			
R678	X	X	X			
R679	X	X	X			
R680	X	X	X			
R681	X	X	X			
R682	X	X	X			
R683	X	X	X			
R684	X	X	X			
R685	X	X	X			
R686	X	X	X			
R687	X	X	X			
R688	X	X	X			
R689	X	X	X			
R690	X	X	X			
R691	X	X	X			
R692	X	X	X			
R693	X	X	X			
R694	X	X	X			
R695	X	X	X			
R696	X	X	X			
R697	X	X	X			
R698	X	X	X			
R699	X	X	X			
R700	X	X	X			
R701	X	X	X			
R702	X	X	X			
R703	X	X	X			
R704	X	X	X			
R705	X	X	X			
R706	X	X	X			
R707	X	X	X			
R708	X	X	X			
R709	X	X	X			
R710	X	X	X			
R711	X	X	X			
R712	X	X	X			
R713	X	X	X			
R714	X	X	X			
R715	X	X	X			
R716	X	X	X			
R717	X	X	X			
R718	X	X	X			
R719	X	X	X			
R720	X	X	X			
R721	X	X	X			
R722	X	X	X			
R723	X	X	X			
R724	X	X	X			
R725	X	X	X			
R726	X	X	X			
R727	X	X	X			
R728	X	X	X			
R729	X	X	X			
R730	X	X	X			
R731	X	X	X			
R732	X	X	X			
R733	X	X	X			
R734	X	X	X			
R735	X	X	X			
R736	X	X	X			
R737	X	X	X			
R738	X	X	X			
R739	X	X	X			
R740	X	X	X			
R741	X	X	X			
R742	X	X	X			
R743	X	X	X			
R744	X	X	X			
R745	X	X	X			
R746	X	X	X			
R747	X	X	X			
R748	X	X	X			
R749	X	X	X			
R750	X	X	X			
R751	X	X	X			
R752	X	X	X			
R753	X	X	X			
R754	X	X	X			
R755	X	X	X			
R756	X	X	X			
R757	X	X	X			
R758	X	X	X			
R759	X	X	X			
R760	X	X	X			
R761	X	X	X			
R762	X	X	X			
R763	X	X	X			
R764	X	X	X			
R765	X	X	X			
R766	X	X	X			
R767	X	X	X			
R768	X	X	X			
R769	X	X	X			
R770	X	X	X			
R771	X	X	X			
R772	X	X	X			
R773	X	X	X			
R774	X	X	X			
R775	X	X	X			
R776	X	X	X			
R777	X	X	X			
R778	X	X	X			
R779	X	X	X			
R780	X	X	X			
R781	X	X	X			
R782	X	X	X			
R783	X	X	X			
R784	X	X	X			
R785	X	X	X			
R786	X	X	X			
R787	X	X	X			
R788	X	X	X			
R789	X	X	X			
R790	X	X	X			
R791	X	X	X			
R792	X	X	X			
R793	X	X	X			
R794	X	X	X			
R795	X	X	X			
R796	X	X	X			
R797	X	X	X			
R798	X	X	X			
R799	X	X	X			
R800	X	X	X			

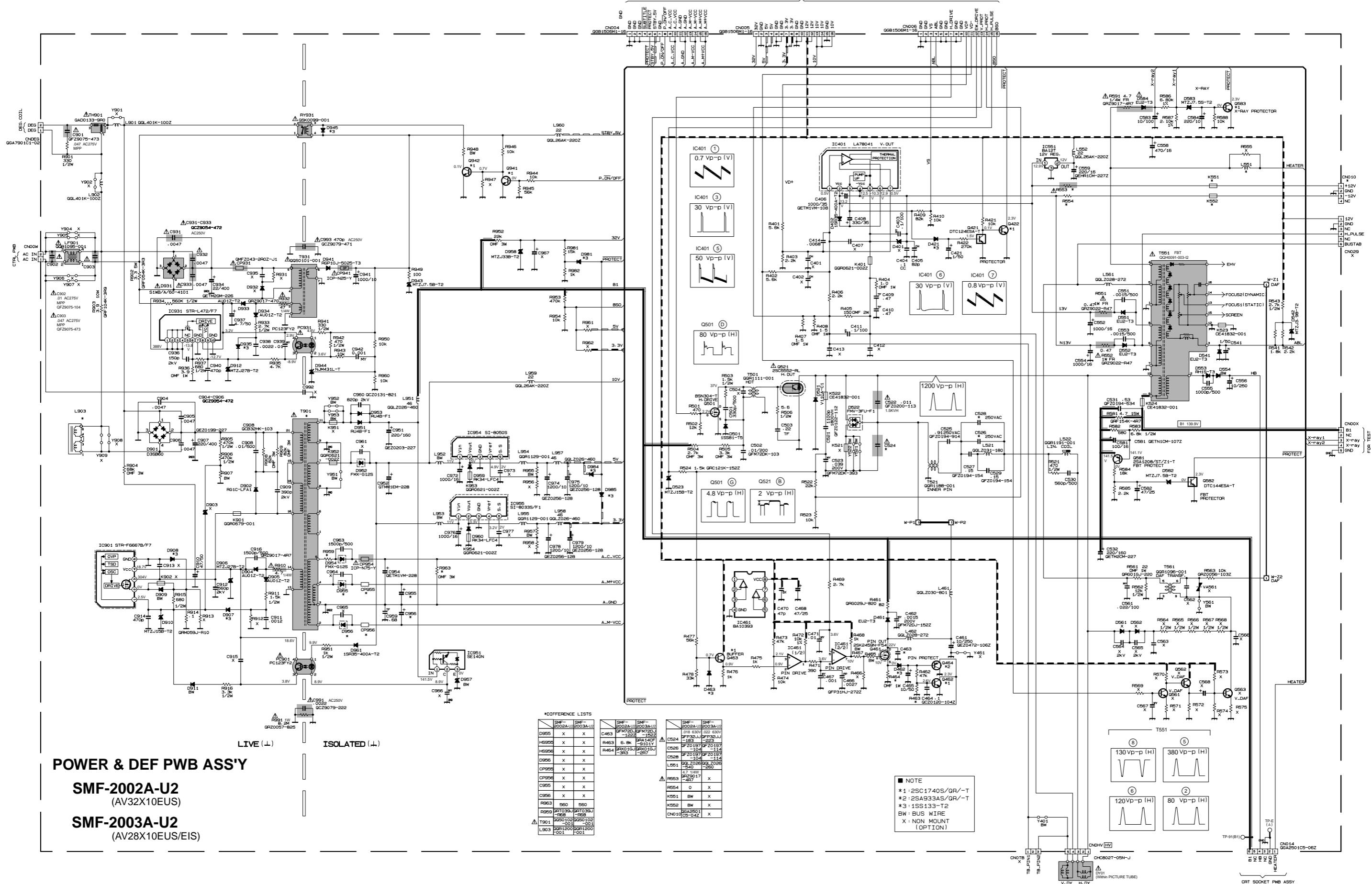
MAIN PWB ASS'Y (2/2)
SMF-1006A-U2 (AV32X10EUS)
SMF-1007A-U2 (AV28X10EUS/EIS)
SMF-1903A-U2 (AV28X10EKS)

NOTE
X : OPTION(NON MOUNT)
BW : 04-BW
0 : NPSA63J-ORX
#1 : 2SC2419K/GR/-X
#2 : 2SA1037AK/GR/-X
#3 : MA111-X
#4 : MA3120A/-X
#5 : DTC124EKA-X
#6 : DTA124EKA-X
#7 : 2SC1740S/GR/-T
#8 : 2SA933AS/GR/-T

POWER & DEF PWB CIRCUIT DIAGRAM

AV32X10EUS
AV28X10EUS
AV28X10EKS
AV28X10EIS

AV32X10EUS
AV28X10EUS
AV28X10EKS
AV28X10EIS



POWER & DEF PWB ASS'Y

SMF-2002A-U2
(AV32X10EUS)

SMF-2003A-U2
(AV28X10EUS/EIS)

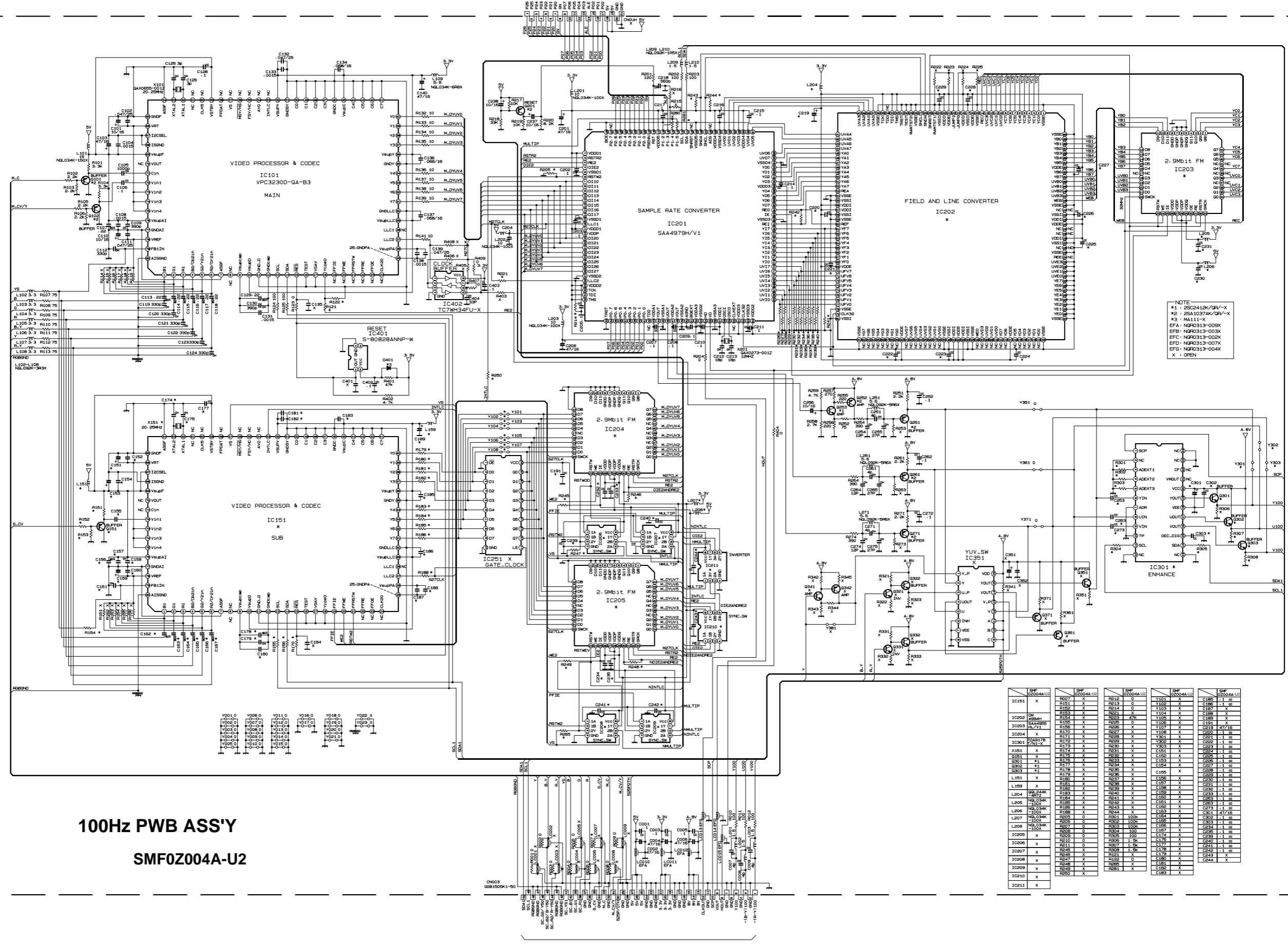
*DIFFERENCE LISTS

SMF-2002A-U2	SMF-2003A-U2	SMF-2002A-U2	SMF-2003A-U2	SMF-2002A-U2	SMF-2003A-U2
D955	X	C463	X	C524	X
H5955	X	R463	X	C526	X
H5956	X	R464	X	C528	X
D956	X	R465	X	C529	X
CP956	X	R466	X	C530	X
CP957	X	R467	X	C531	X
CP958	X	R468	X	C532	X
CP959	X	R469	X	C533	X
CP960	X	R470	X	C534	X
CP961	X	R471	X	C535	X
CP962	X	R472	X	C536	X
CP963	X	R473	X	C537	X
CP964	X	R474	X	C538	X
CP965	X	R475	X	C539	X
CP966	X	R476	X	C540	X
CP967	X	R477	X	C541	X
CP968	X	R478	X	C542	X
CP969	X	R479	X	C543	X
CP970	X	R480	X	C544	X
CP971	X	R481	X	C545	X
CP972	X	R482	X	C546	X
CP973	X	R483	X	C547	X
CP974	X	R484	X	C548	X
CP975	X	R485	X	C549	X
CP976	X	R486	X	C550	X
CP977	X	R487	X	C551	X
CP978	X	R488	X	C552	X
CP979	X	R489	X	C553	X
CP980	X	R490	X	C554	X
CP981	X	R491	X	C555	X
CP982	X	R492	X	C556	X
CP983	X	R493	X	C557	X
CP984	X	R494	X	C558	X
CP985	X	R495	X	C559	X
CP986	X	R496	X	C560	X
CP987	X	R497	X	C561	X
CP988	X	R498	X	C562	X
CP989	X	R499	X	C563	X
CP990	X	R500	X	C564	X
CP991	X	R501	X	C565	X
CP992	X	R502	X	C566	X
CP993	X	R503	X	C567	X
CP994	X	R504	X	C568	X
CP995	X	R505	X	C569	X
CP996	X	R506	X	C570	X
CP997	X	R507	X	C571	X
CP998	X	R508	X	C572	X
CP999	X	R509	X	C573	X
CP1000	X	R510	X	C574	X

AV32X10EUS
 AV28X10EUS
 AV28X10EKS
 AV28X10EIS

AV32X10EUS
 AV28X10EUS
 AV28X10EKS
 AV28X10EIS

100Hz PWB CIRCUIT DIAGRAM

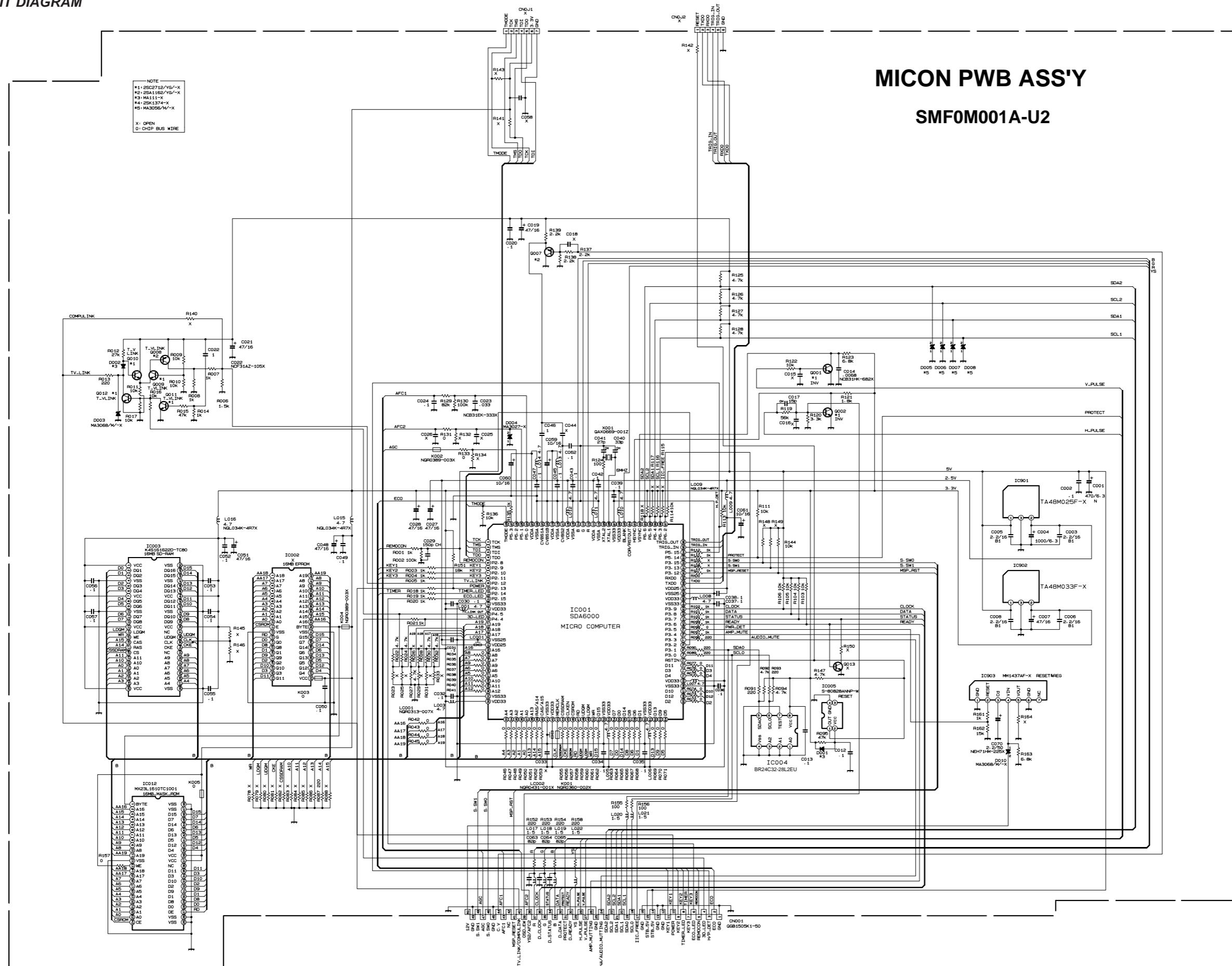


100Hz PWB ASS'Y
 SMF0Z004A-U2

NOTE
 #1 : 25C2412K/GR-X
 #2 : 25A1037AK/GR-X
 #3 : HA1111-K
 EFA : N9P313-005X
 EFB : N9P313-003X
 EFC : N9P313-000X
 EFD : N9P313-007X
 EFG : N9P313-004X
 X : OPEN

REF	QTY	QTY	QTY	QTY
IC151	IC202	IC204	IC205	IC301
R107	R108	R109	R110	R111
R112	R113	R114	R115	R116
R117	R118	R119	R120	R121
R122	R123	R124	R125	R126
R127	R128	R129	R130	R131
R132	R133	R134	R135	R136
R137	R138	R139	R140	R141
R142	R143	R144	R145	R146
R147	R148	R149	R150	R151
R152	R153	R154	R155	R156
R157	R158	R159	R160	R161
R162	R163	R164	R165	R166
R167	R168	R169	R170	R171
R172	R173	R174	R175	R176
R177	R178	R179	R180	R181
R182	R183	R184	R185	R186
R187	R188	R189	R190	R191
R192	R193	R194	R195	R196
R197	R198	R199	R200	R201
R202	R203	R204	R205	R206
R207	R208	R209	R210	R211
R212	R213	R214	R215	R216
R217	R218	R219	R220	R221
R222	R223	R224	R225	R226
R227	R228	R229	R230	R231
R232	R233	R234	R235	R236
R237	R238	R239	R240	R241
R242	R243	R244	R245	R246
R247	R248	R249	R250	R251
R252	R253	R254	R255	R256
R257	R258	R259	R260	R261
R262	R263	R264	R265	R266
R267	R268	R269	R270	R271
R272	R273	R274	R275	R276
R277	R278	R279	R280	R281
R282	R283	R284	R285	R286
R287	R288	R289	R290	R291
R292	R293	R294	R295	R296
R297	R298	R299	R300	R301
R302	R303	R304	R305	R306
R307	R308	R309	R310	R311
R312	R313	R314	R315	R316
R317	R318	R319	R320	R321
R322	R323	R324	R325	R326
R327	R328	R329	R330	R331
R332	R333	R334	R335	R336
R337	R338	R339	R340	R341
R342	R343	R344	R345	R346
R347	R348	R349	R350	R351
R352	R353	R354	R355	R356
R357	R358	R359	R360	R361
R362	R363	R364	R365	R366
R367	R368	R369	R370	R371
R372	R373	R374	R375	R376
R377	R378	R379	R380	R381
R382	R383	R384	R385	R386
R387	R388	R389	R390	R391
R392	R393	R394	R395	R396
R397	R398	R399	R400	R401
R402	R403	R404	R405	R406
R407	R408	R409	R410	R411
R412	R413	R414	R415	R416
R417	R418	R419	R420	R421
R422	R423	R424	R425	R426
R427	R428	R429	R430	R431
R432	R433	R434	R435	R436
R437	R438	R439	R440	R441
R442	R443	R444	R445	R446
R447	R448	R449	R450	R451
R452	R453	R454	R455	R456
R457	R458	R459	R460	R461
R462	R463	R464	R465	R466
R467	R468	R469	R470	R471
R472	R473	R474	R475	R476
R477	R478	R479	R480	R481
R482	R483	R484	R485	R486
R487	R488	R489	R490	R491
R492	R493	R494	R495	R496
R497	R498	R499	R500	R501
R502	R503	R504	R505	R506
R507	R508	R509	R510	R511
R512	R513	R514	R515	R516
R517	R518	R519	R520	R521
R522	R523	R524	R525	R526
R527	R528	R529	R530	R531
R532	R533	R534	R535	R536
R537	R538	R539	R540	R541
R542	R543	R544	R545	R546
R547	R548	R549	R550	R551
R552	R553	R554	R555	R556
R557	R558	R559	R560	R561
R562	R563	R564	R565	R566
R567	R568	R569	R570	R571
R572	R573	R574	R575	R576
R577	R578	R579	R580	R581
R582	R583	R584	R585	R586
R587	R588	R589	R590	R591
R592	R593	R594	R595	R596
R597	R598	R599	R600	R601
R602	R603	R604	R605	R606
R607	R608	R609	R610	R611
R612	R613	R614	R615	R616
R617	R618	R619	R620	R621
R622	R623	R624	R625	R626
R627	R628	R629	R630	R631
R632	R633	R634	R635	R636
R637	R638	R639	R640	R641
R642	R643	R644	R645	R646
R647	R648	R649	R650	R651
R652	R653	R654	R655	R656
R657	R658	R659	R660	R661
R662	R663	R664	R665	R666
R667	R668	R669	R670	R671
R672	R673	R674	R675	R676
R677	R678	R679	R680	R681
R682	R683	R684	R685	R686
R687	R688	R689	R690	R691
R692	R693	R694	R695	R696
R697	R698	R699	R700	R701
R702	R703	R704	R705	R706
R707	R708	R709	R710	R711
R712	R713	R714	R715	R716
R717	R718	R719	R720	R721
R722	R723	R724	R725	R726
R727	R728	R729	R730	R731
R732	R733	R734	R735	R736
R737	R738	R739	R740	R741
R742	R743	R744	R745	R746
R747	R748	R749	R750	R751
R752	R753	R754	R755	R756
R757	R758	R759	R760	R761
R762	R763	R764	R765	R766
R767	R768	R769	R770	R771
R772	R773	R774	R775	R776
R777	R778	R779	R780	R781
R782	R783	R784	R785	R786
R787	R788	R789	R790	R791
R792	R793	R794	R795	R796
R797	R798	R799	R800	R801
R802	R803	R804	R805	R806
R807	R808	R809	R810	R811
R812	R813	R814	R815	R816
R817	R818	R819	R820	R821
R822	R823	R824	R825	R826
R827	R828	R829	R830	R831
R832	R833	R834	R835	R836
R837	R838	R839	R840	R841
R842	R843	R844	R845	R846
R847	R848	R849	R850	R851
R852	R853	R854	R855	R856
R857	R858	R859	R860	R861
R862	R863	R864	R865	R866
R867	R868	R869	R870	R871
R872	R873	R874	R875	R876
R877	R878	R879	R880	R881
R882	R883	R884	R885	R886
R887	R888	R889	R890	R891
R892	R893	R894	R895	R896
R897	R898	R899	R900	R901
R902	R903	R904	R905	R906
R907	R908	R909	R910	R911
R912	R913	R914	R915	R916
R917	R918	R919	R920	R921
R922	R923	R924	R925	R926
R927	R928	R929	R930	R931
R932	R933	R934	R935	R936
R937	R938	R939	R940	R941
R942	R943	R944	R945	R946
R947	R948	R949	R950	R951
R952	R953	R954	R955	R956
R957	R958	R959	R960	R961
R962	R963	R964	R965	R966
R967	R968	R969	R970	R971
R972	R973	R974	R975	R976
R977	R978	R979	R980	R981
R982	R983	R984	R985	R986
R987	R988	R989	R990	R991
R992	R993	R994	R995	R996
R997	R998	R999	R1000	R1001

MICON PWB ASS'Y
 SMF0M001A-U2



FRONT CONTROL PWB CIRCUIT DIAGRAM

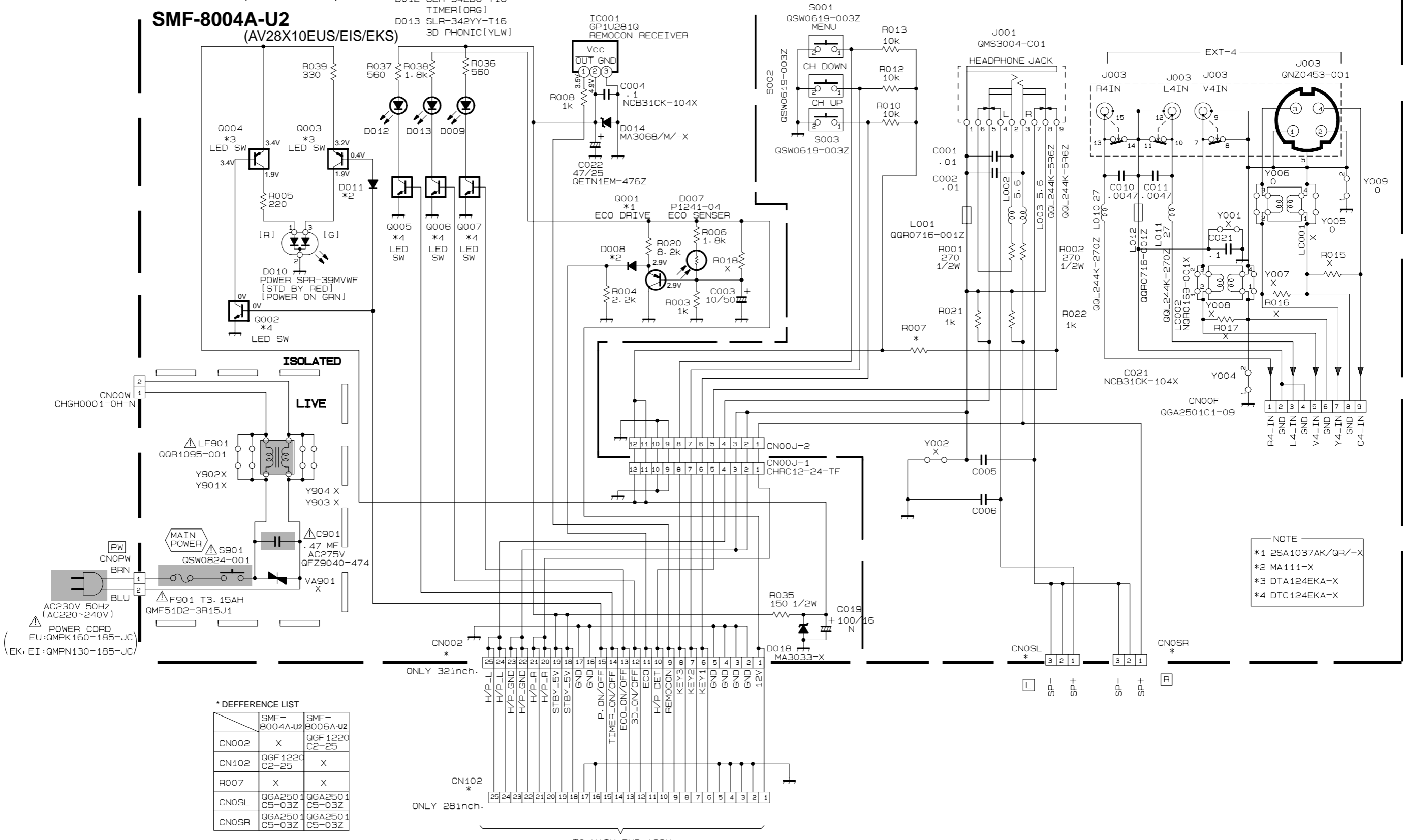
FRONT CONTROL PWB ASS'Y(1/2)

SMF-8006A-U2
(AV32X10EUS)

SMF-8004A-U2
(AV28X10EUS/EIS/EKS)

D009 SLR-342MG-T16
ECO[GRN]
D012 SLR-342DU-T16
TIMER[ORG]
D013 SLR-342YY-T16
3D-PHONIC[YLW]

FRONT CONTROL PWB ASS'Y(2/2)



* DIFFERENCE LIST

	SMF-8004A-U2	SMF-8006A-U2
CN002	X	QGF1220 C2-25
CN102	QGF1220 C2-25	X
R007	X	X
CN0SL	QGA2501 C5-03Z	QGA2501 C5-03Z
CN0SR	QGA2501 C5-03Z	QGA2501 C5-03Z

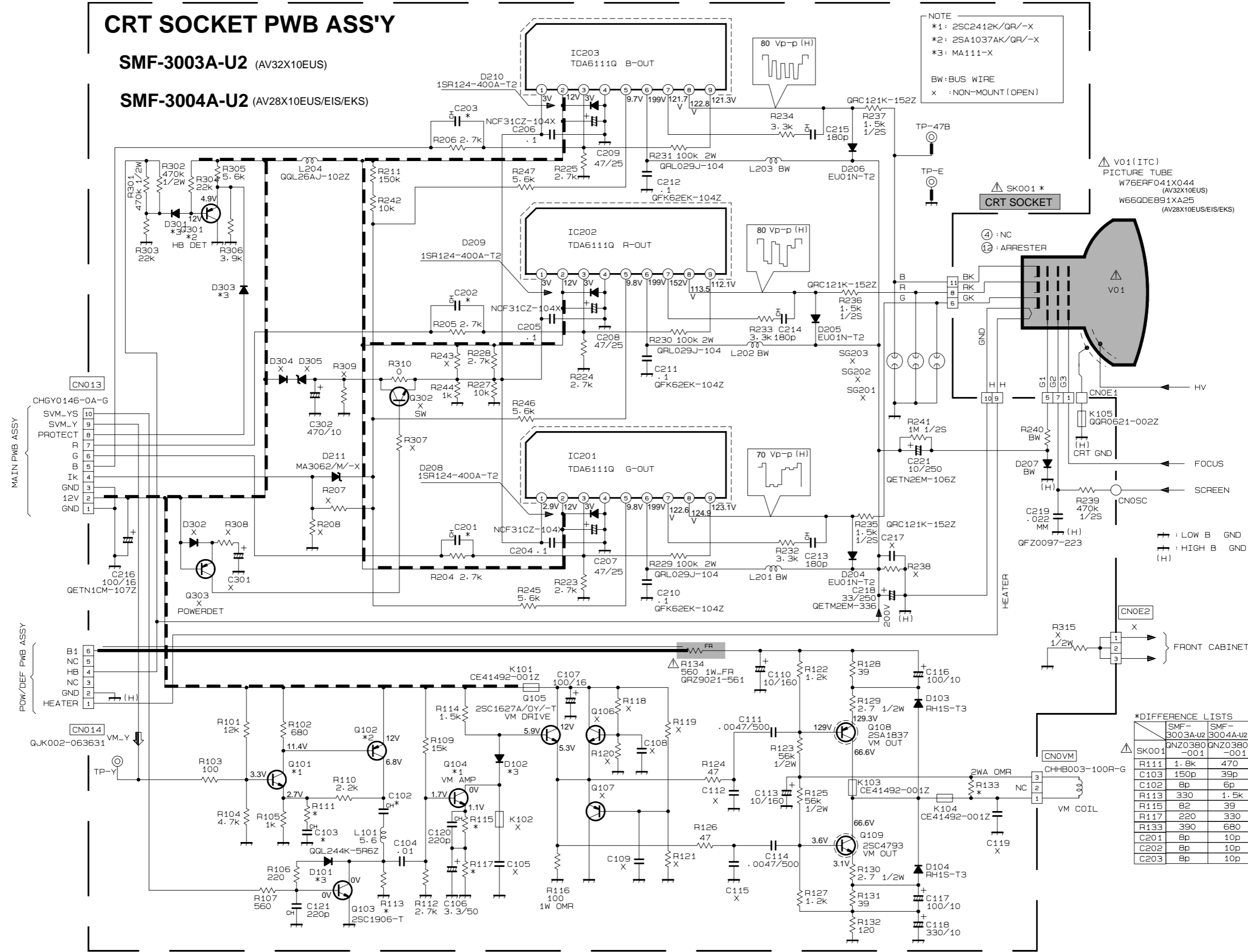
NOTE
*1 2SA1037AK/QR/-X
*2 MA111-X
*3 DTA124EKA-X
*4 DTC124EKA-X

CRT SOCKET PWB ASS'Y

SMF-3003A-U2 (AV32X10EUS)

SMF-3004A-U2 (AV28X10EUS/EIS/EKS)

NOTE
*1: 2SC2412K/QR/-X
*2: 2SA1037AK/QR/-X
*3: MA111-X
BW: BUS WIRE
X: NON-MOUNT (OPEN)



VO1 (ITC)
PICTURE TUBE
W76ERF041X044 (AV32X10EUS)
W66GDE891XA25 (AV28X10EUS/EIS/EKS)

SK001 *
CRT SOCKET
④: NC
②: ARRESTER

HV
FOCUS
SCREEN
HEATER
FRONT CABINET

*DIFFERENCE LISTS

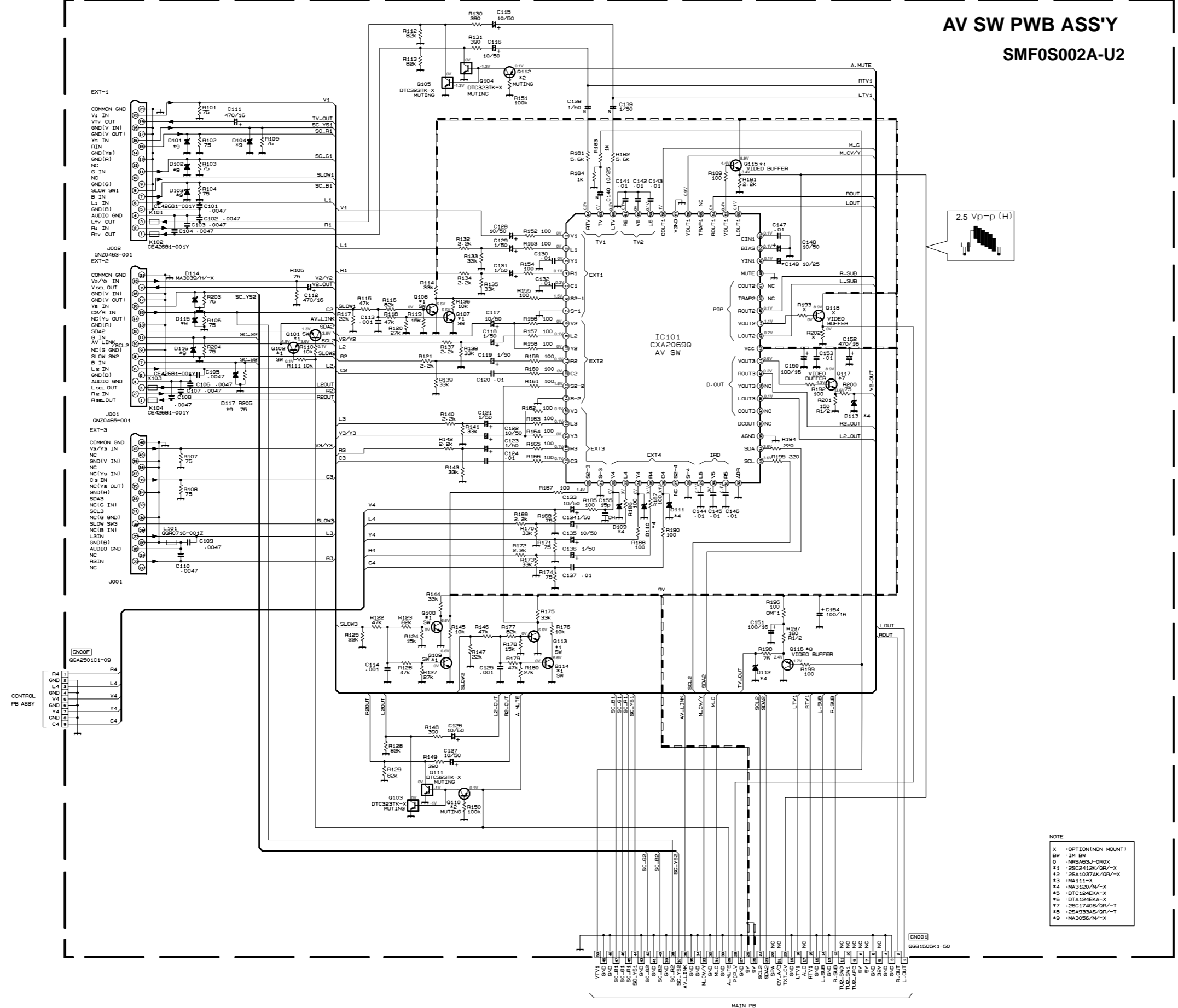
	SMF-3003A-U2	SMF-3004A-U2
SK001	GNZ0380-001	GNZ0380-001
R111	1.8k	470
C103	150p	39p
C102	8p	6p
R113	330	1.5k
R115	82	39
R117	220	330
R133	390	680
C201	8p	10p
C202	8p	10p
C203	8p	10p

AV32X10EUS
AV28X10EUS
AV28X10EKS
AV28X10EIS

AV32X10EUS
AV28X10EUS
AV28X10EKS
AV28X10EIS

AV SW PWB CIRCUIT DIAGRAM

AV SW PWB ASS'Y
SMF0S002A-U2



NOTE

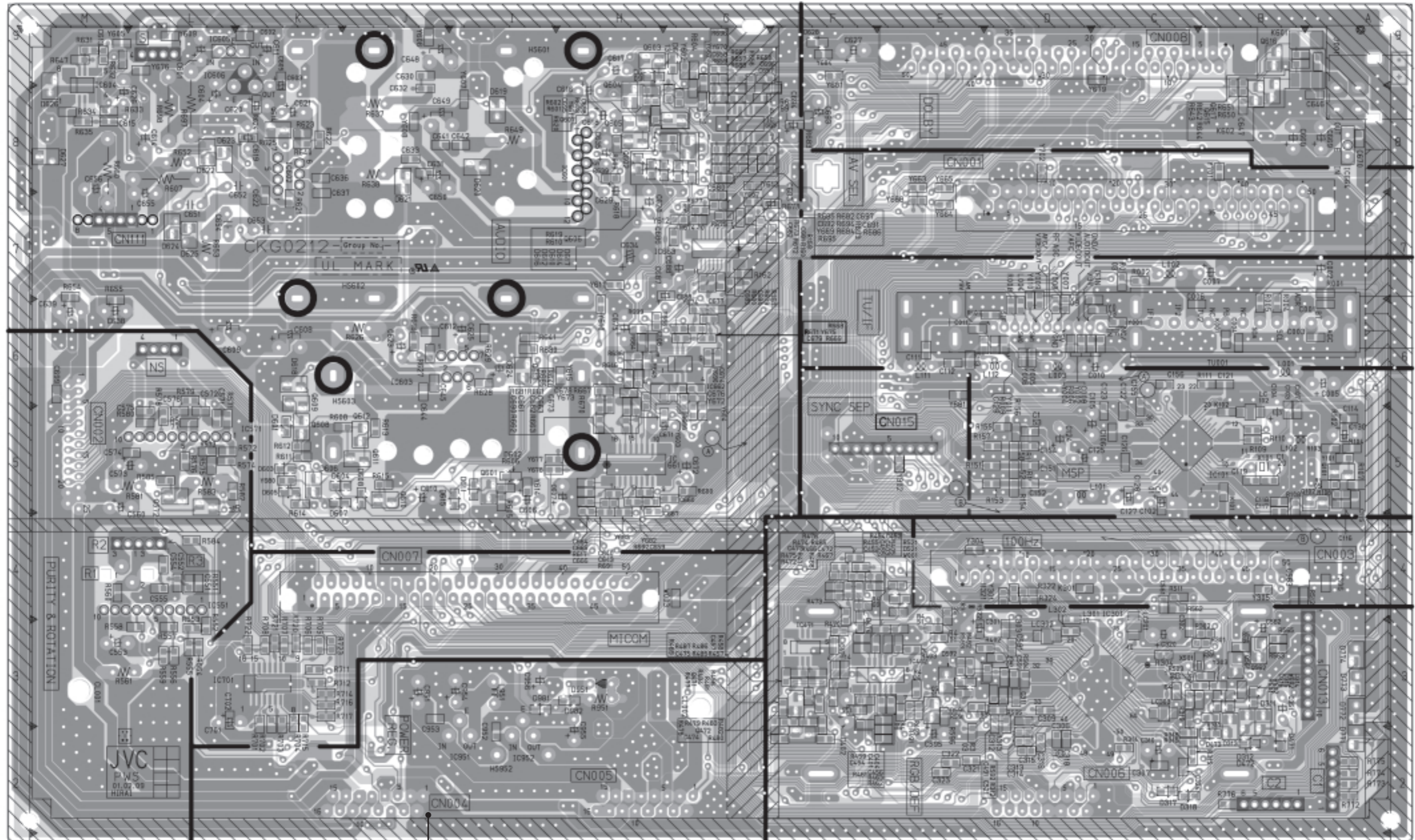
- X : OPTION(NON MOUNT)
- BW : 2M-BW
- 0 : NPSA63J-OROX
- *1 : 2SC2412K/GR/-X
- *2 : 2SA1037AK/GR/-X
- *3 : MA111-X
- *4 : MA3120/M/-X
- *5 : DTC124EKA-X
- *6 : DTA124EKA-X
- *7 : 2SC1740S/GR/-T
- *8 : 2SA933AS/GR/-T
- *9 : MA3056/M/-X

AV32X10EUS
AV28X10EUS
AV28X10EKS
AV28X10EIS

AV32X10EUS
AV28X10EUS
AV28X10EKS
AV28X10EIS

PATTERN DIAGRAMS MAIN PWB PATTERN

← FRONT



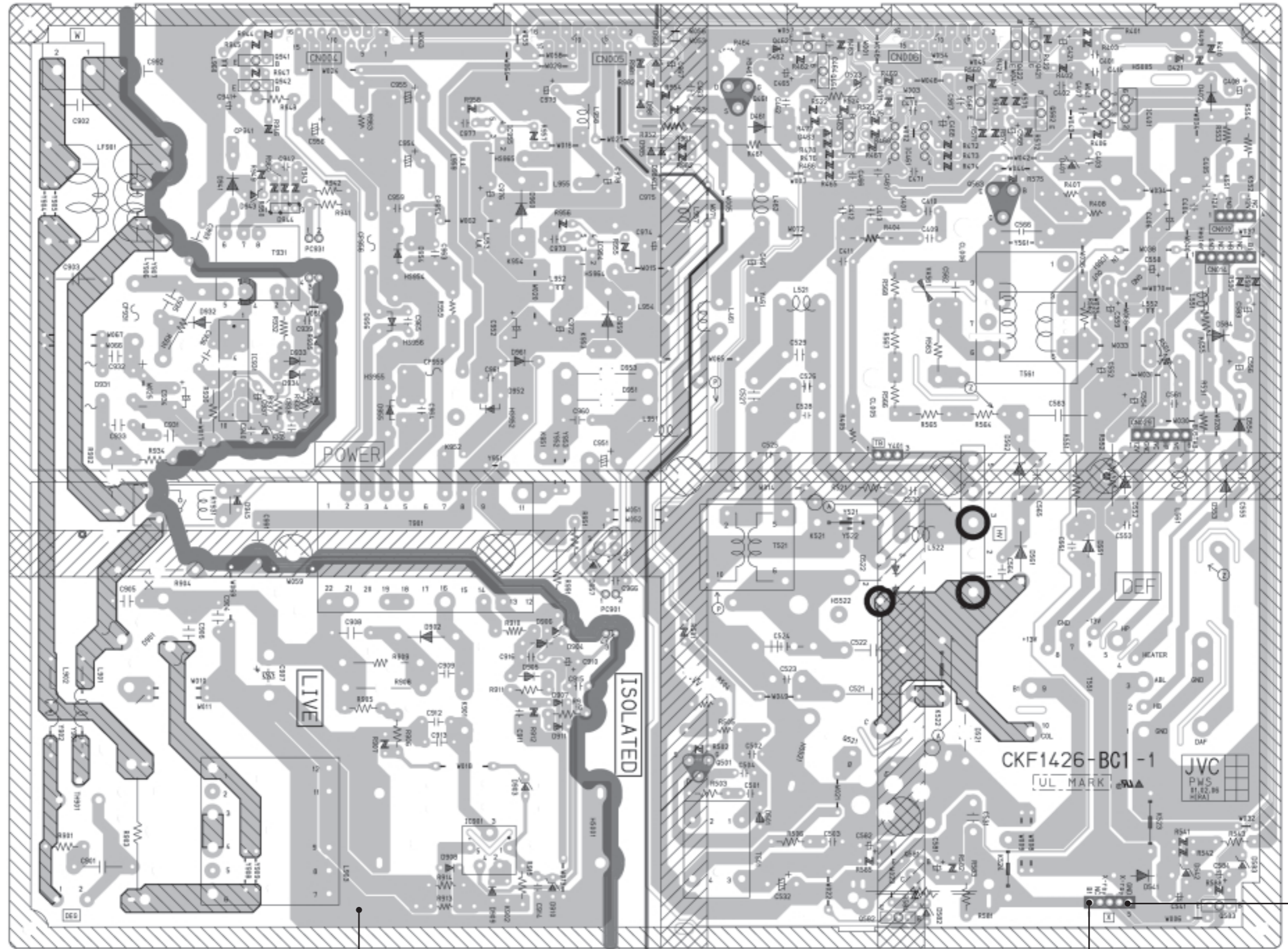
(77)

AV32X10EUS
AV28X10EUS
AV28X10EKS
AV28X10EIS

AV32X10EUS
AV28X10EUS
AV28X10EKS
AV28X10EIS

POWER & DEF PWB PATTERN

FRONT



No.51780

(T)

2-23

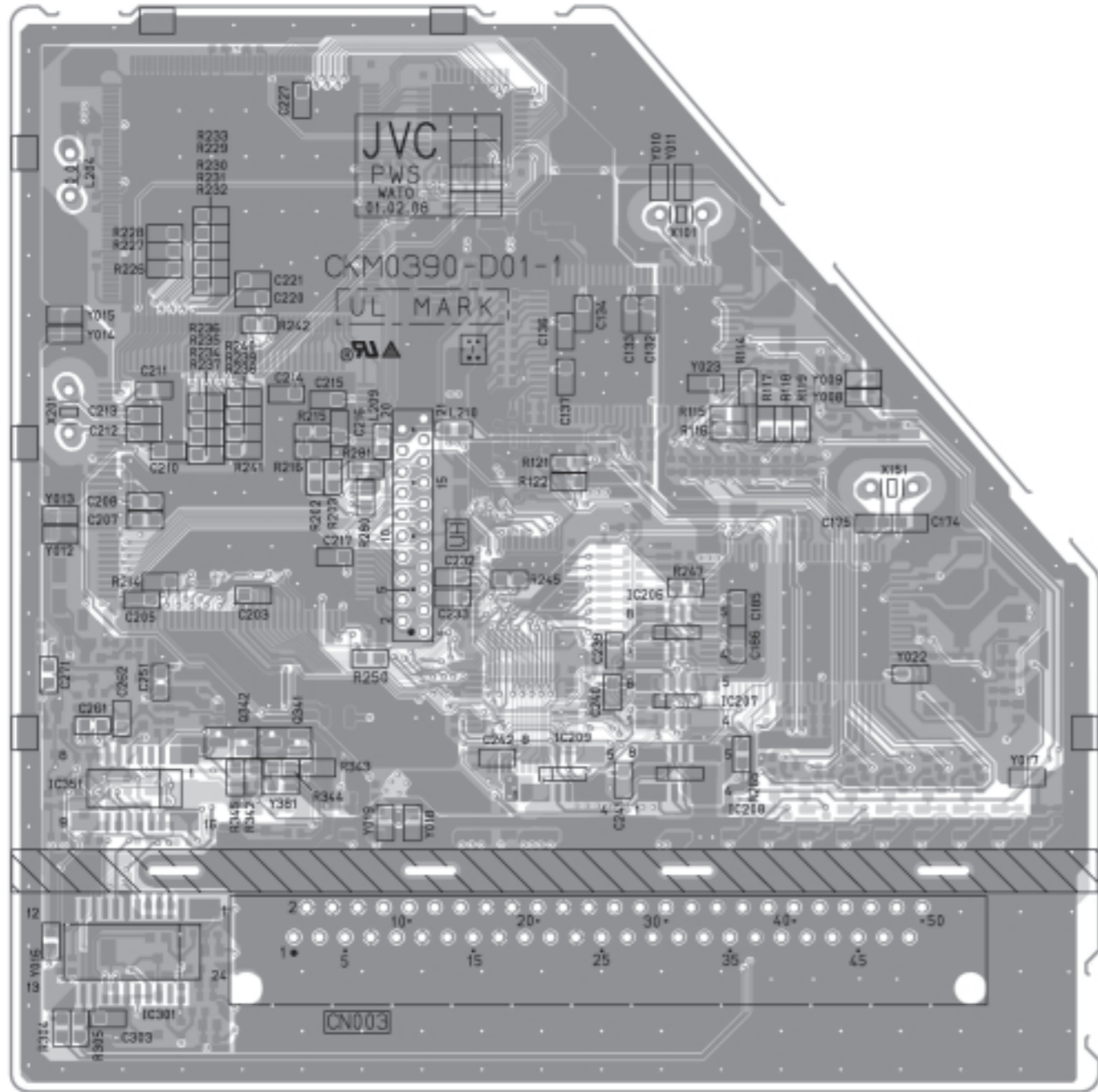
2-24

No.51780

TP-91(B1)

TP-E
(H)

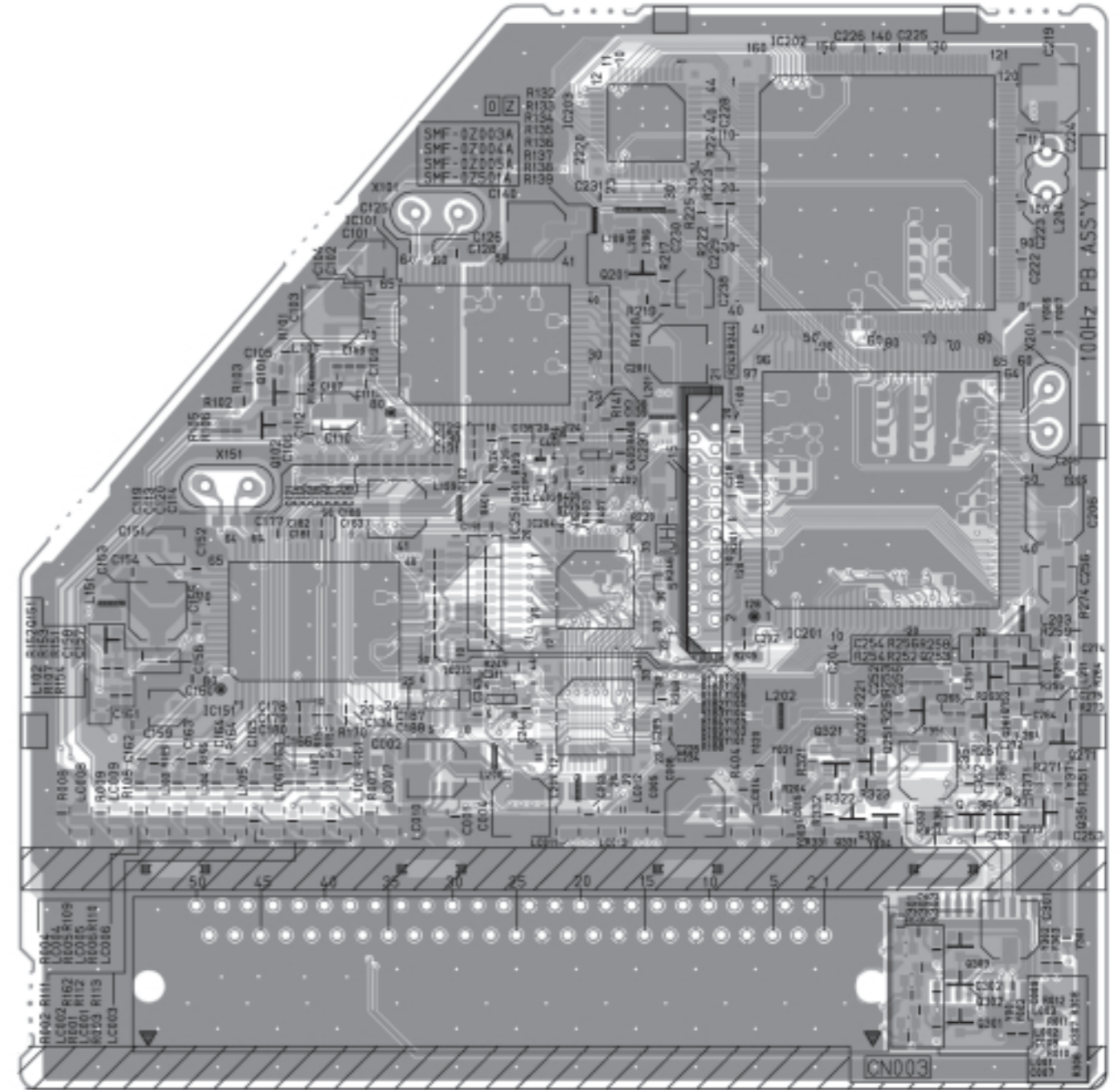
100Hz PWB PATTERN (SOLDER SIDE)



AV32X10EUS
AV28X10EUS
AV28X10EKS
AV28X10EIS

AV32X10EUS
AV28X10EUS
AV28X10EKS
AV28X10EIS

100Hz PWB PATTERN (PARTS SIDE)



AV32X10EUS
AV28X10EUS
AV28X10EKS
AV28X10EIS

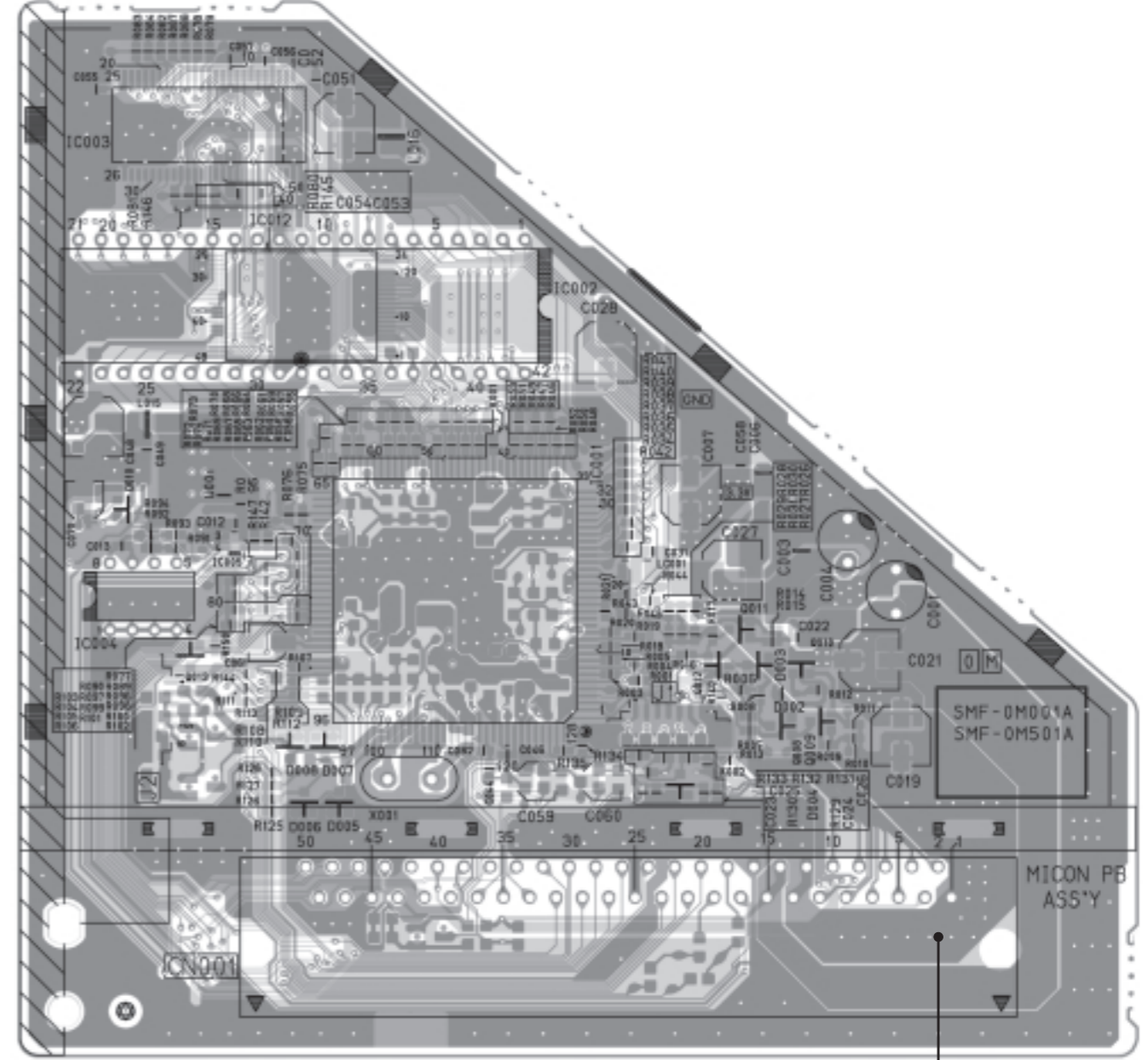
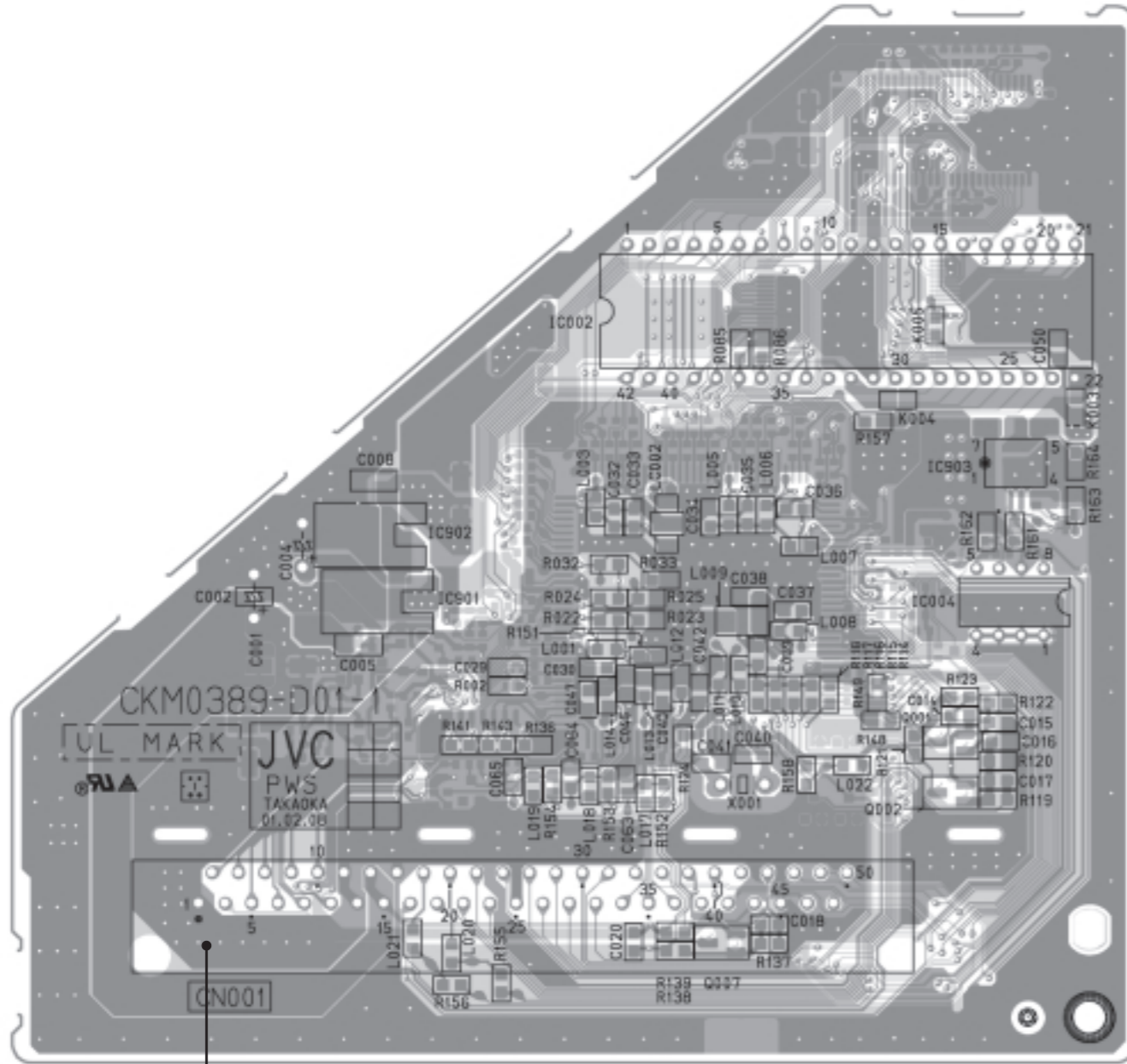
AV32X10EUS
AV28X10EUS
AV28X10EKS
AV28X10EIS

MICON PWB PATTERN (SOLDER SIDE)

MICON PWB PATTERN (PARTS SIDE)

↑ TOP

↑ TOP

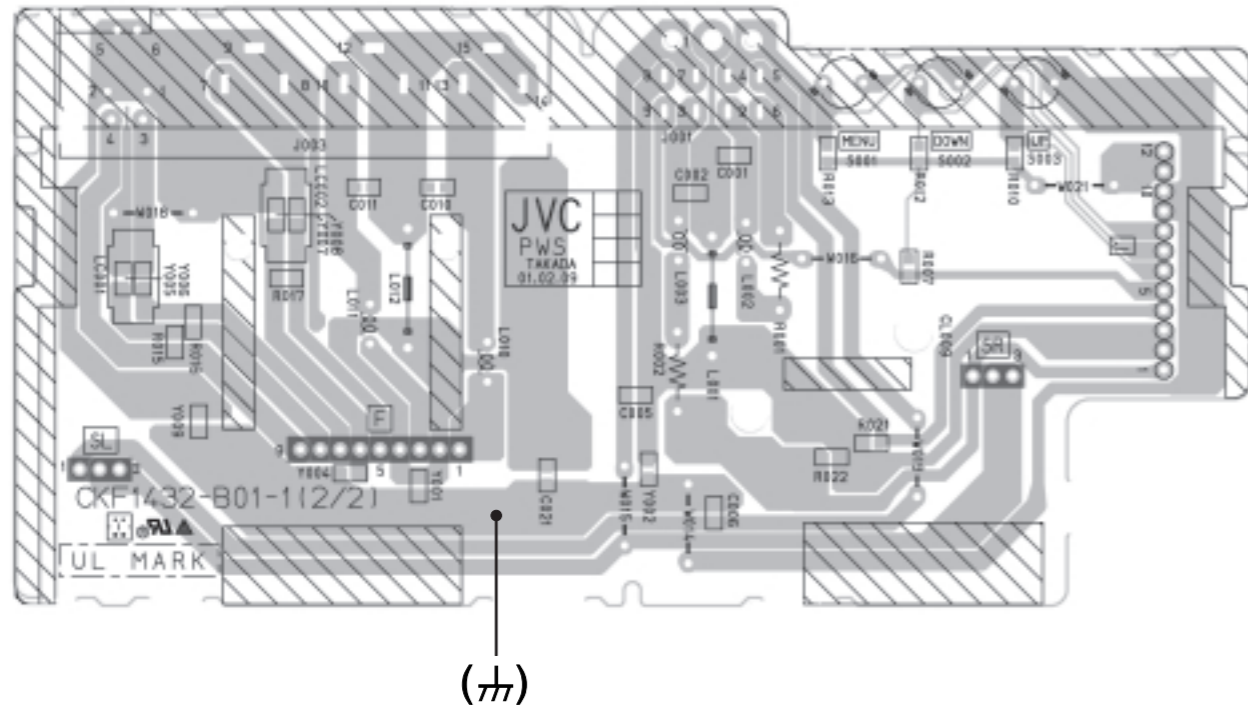


AV32X10EUS
AV28X10EUS
AV28X10EKS
AV28X10EIS

AV32X10EUS
AV28X10EUS
AV28X10EKS
AV28X10EIS

FRONT CONTROL PWB PATTERN

↑
FRONT



↑
FRONT

